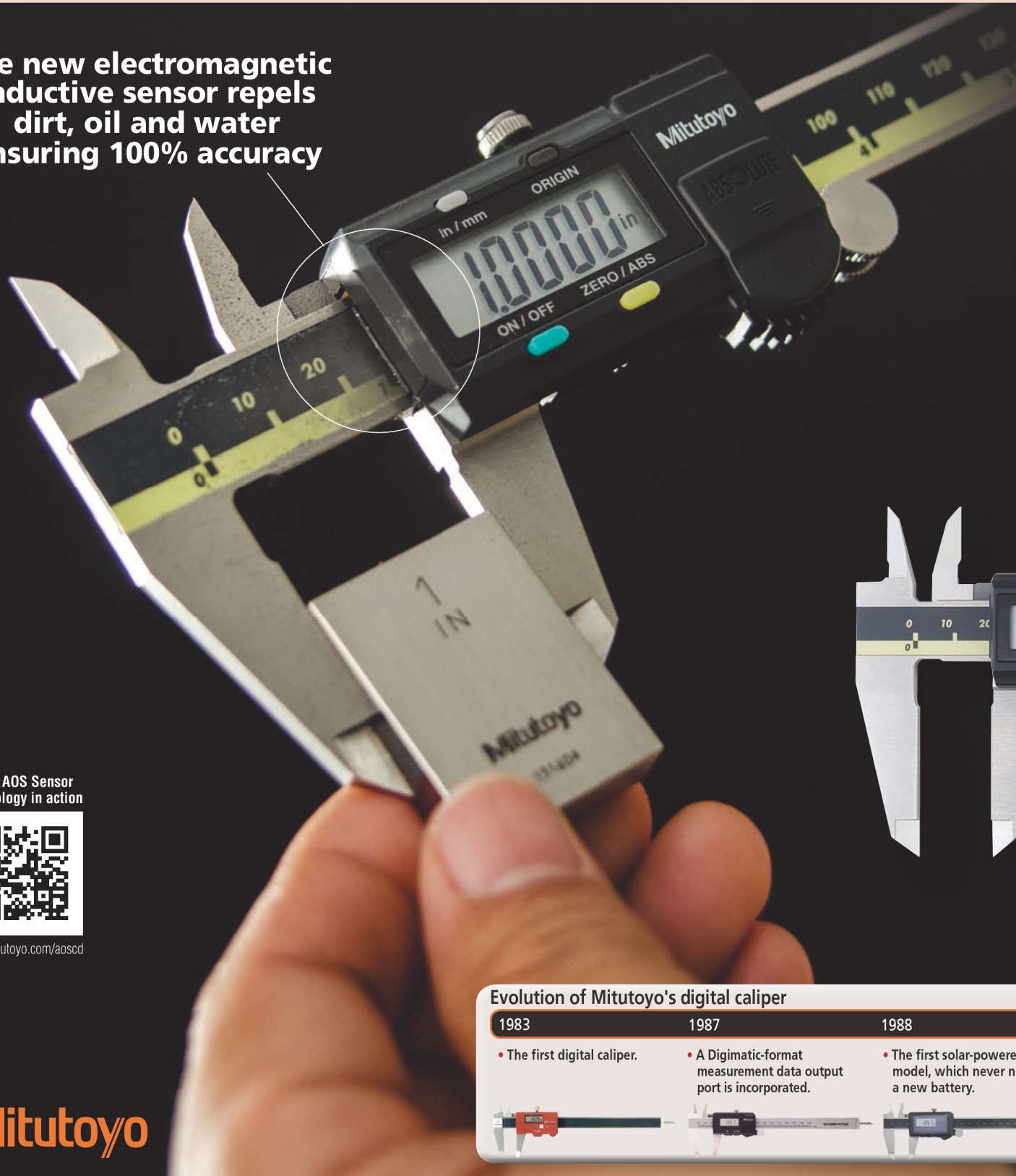


AOS Absolute Digimatic Caliper

A new series of digimatic calipers derived from 30 years of accumulated experience, featuring a new **induction type absolute encoder and AOS (Advanced Onsite Sensor)** and a

The new electromagnetic inductive sensor repels dirt, oil and water ensuring 100% accuracy



View AOS Sensor Technology in action



www.mitutoyo.com/aoscd

Mitutoyo

Evolution of Mitutoyo's digital caliper

1983

- The first digital caliper.



1987

- A Digimatic-format measurement data output port is incorporated.

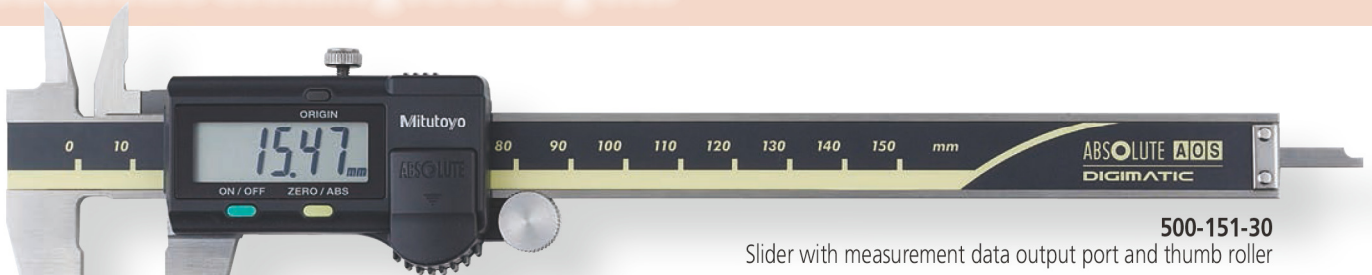


1988

- The first solar-powered model, which never needs a new battery.

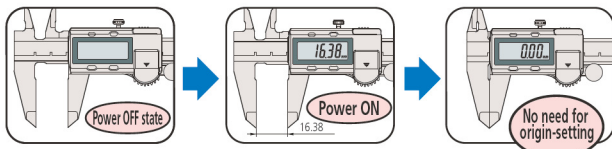


ated Mitutoyo technologies. Equipped with **the electromagnetic** applied for ABS coolant-proof calipers.



500-151-30
Slider with measurement data output port and thumb roller

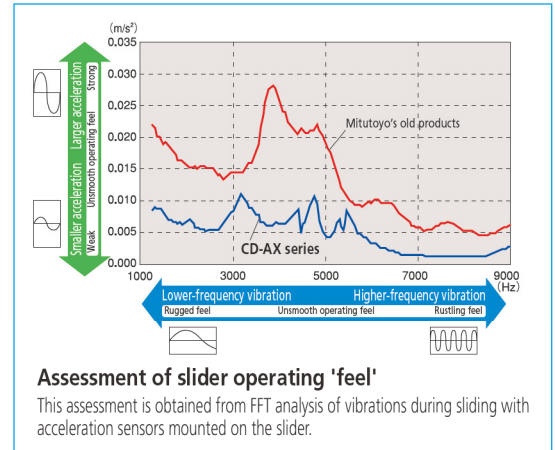
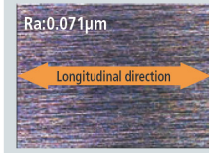
The ABS (absolute) scale **requires no origin setting** after power-on and **also has no limit to response speed**.



ABSOLUTE™

The slider provides **smooth, stable and comfortable** operation.

The quality of the slider working surface has improved with the latest machining technology.



500-197-30
Slider without a measurement data output port but with a thumb roller

- A battery life of approximately 3.5 years has been achieved under normal use through the adoption of Mitutoyo's ABSOLUTE scale.
- The slider configuration features an ergonomic, thumb-friendly shape.
- Step-measurement capable.
- Font height: 9mm, alleviation of fatigue with the high-contrast LCD
- Carbide-tipped jaw models are ideally suited to the measurement of rough-machined workpieces, castings, grindstones, etc.
- The data output function allows integration into statistical process control and measurement systems.



An inspection certificate is included standard with each caliper.

1993	2000	2003	2005	2013
<ul style="list-style-type: none"> • Introduction of Mitutoyo's electrostatic capacitance ABSOLUTE encoder caliper. 	<ul style="list-style-type: none"> • Introduction of an ABSOLUTE encoder caliper offering IP65-level coolant-proof performance. 	<ul style="list-style-type: none"> • Introduction of an induction type ABSOLUTE encoder caliper offering IP67-level coolant-proof performance. 	<ul style="list-style-type: none"> • Introduction of a solar-powered ABSOLUTE encoder caliper offering IP67-level coolant-proof performance. 	<ul style="list-style-type: none"> • The AOS induction type ABSOLUTE encoder is introduced to a standard caliper.